

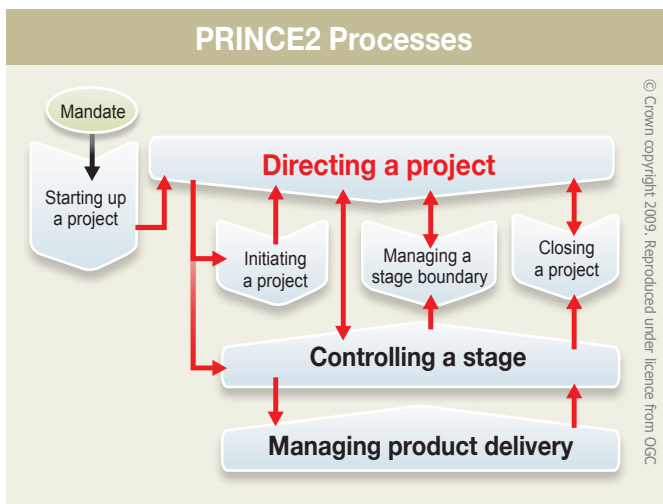
PRINCE2® Overview

Overview Course Information

PRINCE2 is a project management methodology that will benefit all types of projects and projects of different sizes. Designed to facilitate effective control of projects it consists of 3 core elements; PRINCE2 Principles, PRINCE2 Processes and PRINCE2 Themes.

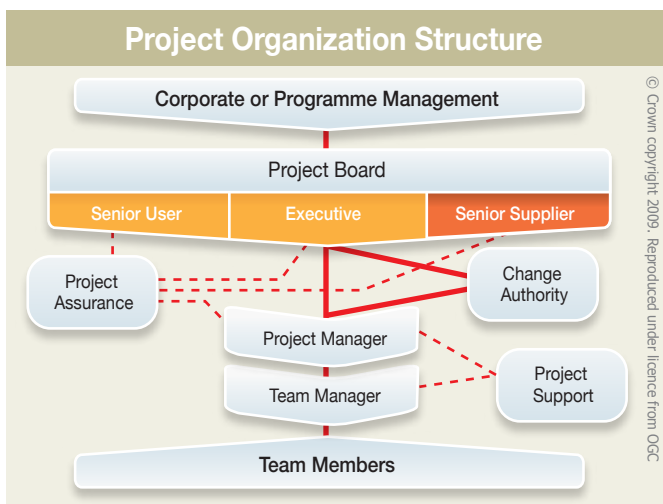
The PRINCE2 Overview course is designed to provide project team members an understanding on how the PRINCE2 methodology operates. In this course participants will be introduced to the elements that make up PRINCE2 and be given the opportunity to practice key concepts and tools.

PRINCE2 Overview is delivered as an in-house training course and can be tailored and offered as either a half day or full day event.



At the end of the Overview course participants will be able to:

- Understand the value and terminology of PRINCE2
- Effectively contribute to a PRINCE2 managed project
- Understand the principles, processes and themes applied to a PRINCE2 project
- Understand the purpose of key PRINCE2 management products
- Utilise PRINCE2 tools to report progress and issues
- Use PRINCE2 tools to control the work of teams



Who should attend?

Anyone wanting to understand how they can effectively contribute to a project being managed within a PRINCE2 environment.

HiLogic offers a calendar of public courses plus in-house training courses. To learn more about how PRINCE2 and our services can benefit you visit www.hilogic.net

HiLogic is a PRINCE2 Accredited Training Organization. Our training and coaching services are designed to assist organizations to quickly develop the skills base and 'know-how' needed to effectively apply PRINCE2.



PRINCE2® is a Registered Trade Mark of the Office of Government Commerce in the United Kingdom and other countries. The Swirl logo™ is a Trade Mark of the Office of Government Commerce.

HiLogic Pty Ltd HiLogic Sdn Bhd HiLogic Management Ltd

Contact us at:

Phone
Australia : 1300 79 3334
Malaysia : 03 2615 0081
UK : 0845 003 9551
International enquiries : +61 3 8676 0629
: +60 3 2615 0081

Email : enquiries@hilogic.net



www.hilogic.net

© HiLogic Project Management 2009